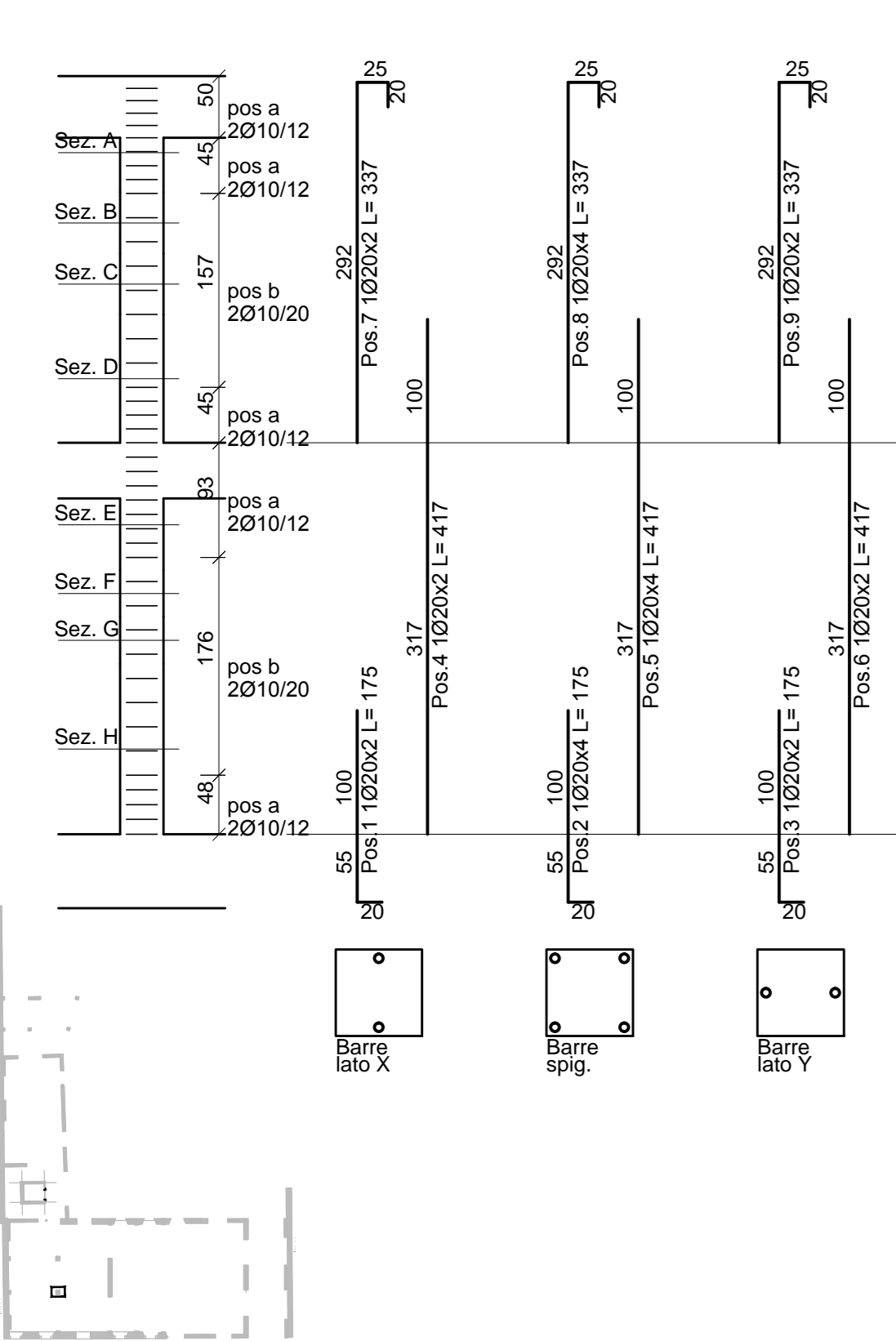
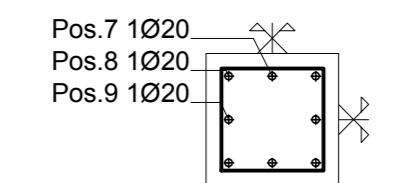


**Pilastrata P8**

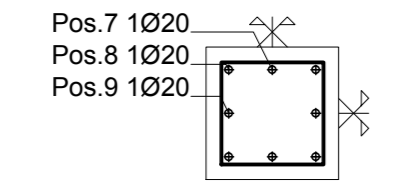
Elenco staffe  
a (2X:2Y)Ø10/12  
b (2X:2Y)Ø10/20



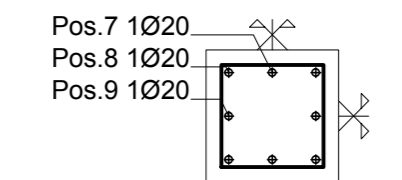
**Sezione A 35x35**



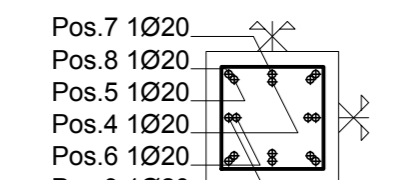
**Sezione B 35x35**



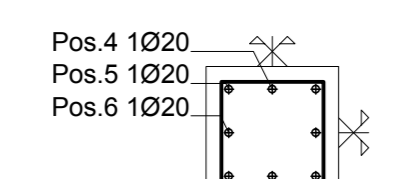
**Sezione C 35x35**



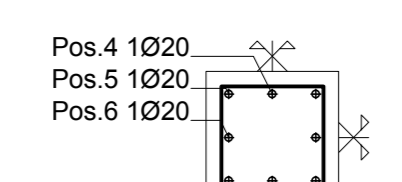
**Sezione D 35x35**



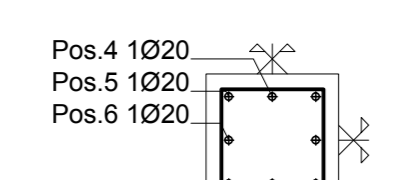
**Sezione E 35x35**



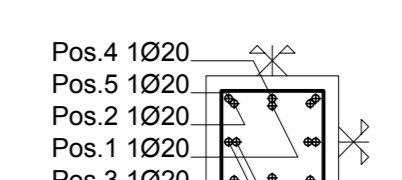
**Sezione F 35x35**



**Sezione G 35x35**

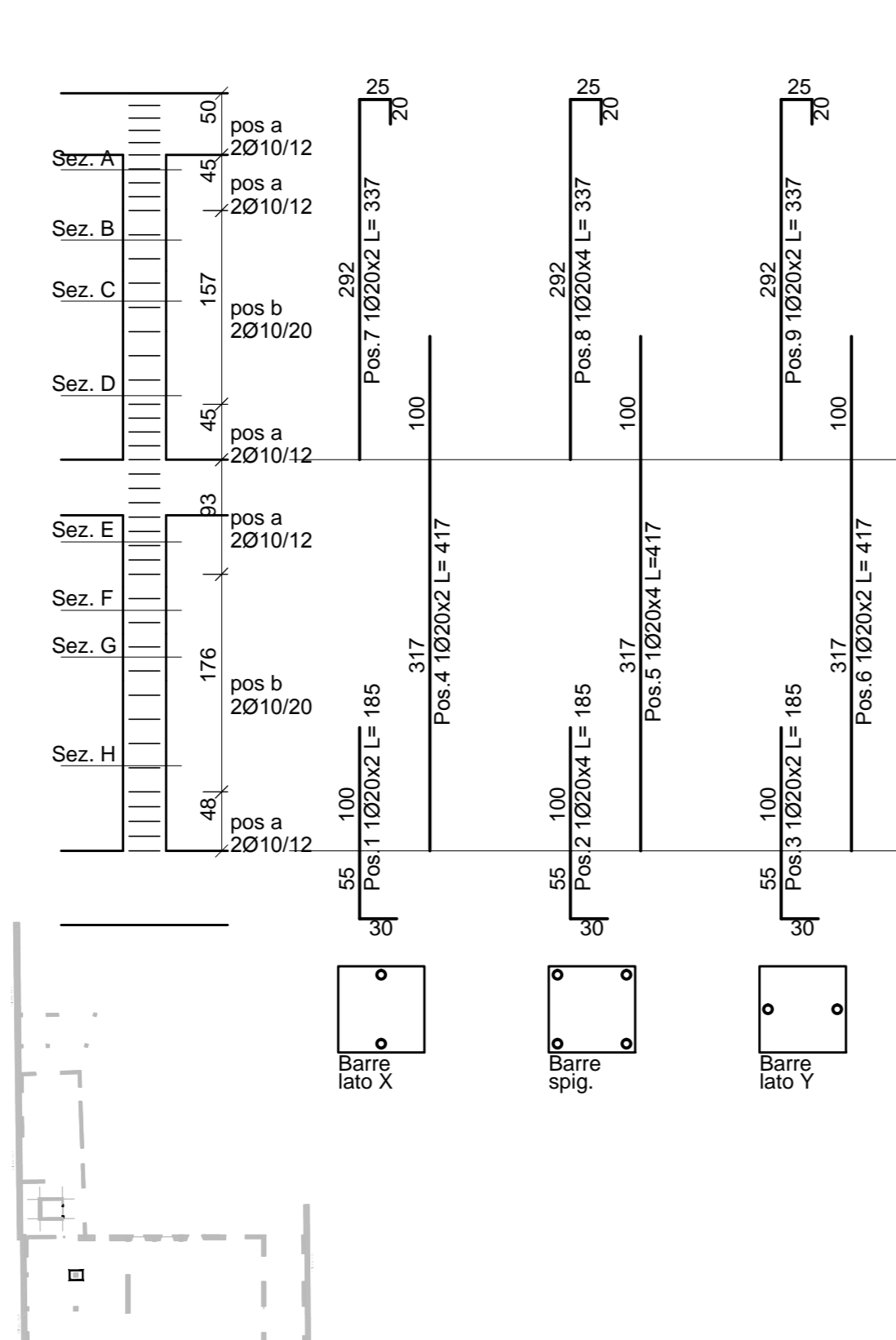


**Sezione H 35x35**

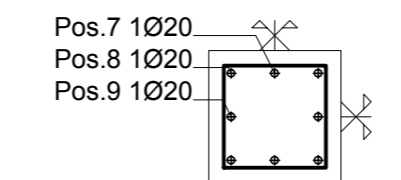


**Pilastrata P9**

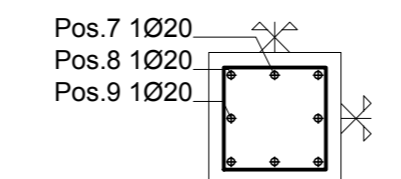
Elenco staffe  
a (2X:2Y)Ø10/12  
b (2X:2Y)Ø10/20



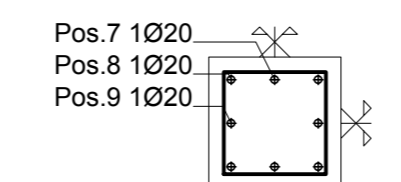
**Sezione A 35x35**



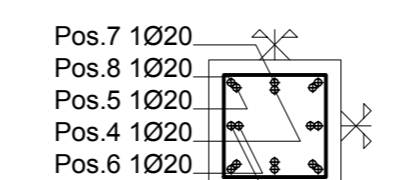
**Sezione B 35x35**



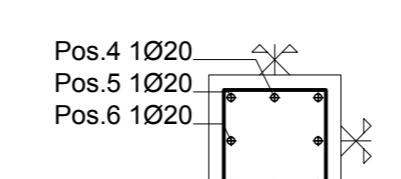
**Sezione C 35x35**



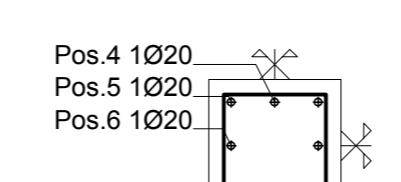
**Sezione D 35x35**



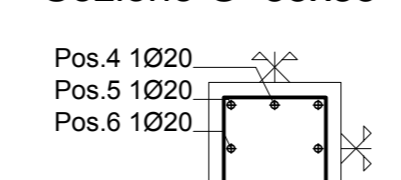
**Sezione E 35x35**



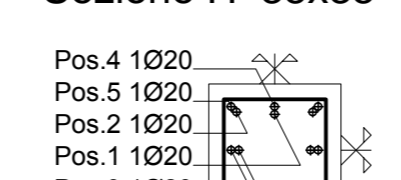
**Sezione F 35x35**



**Sezione G 35x35**

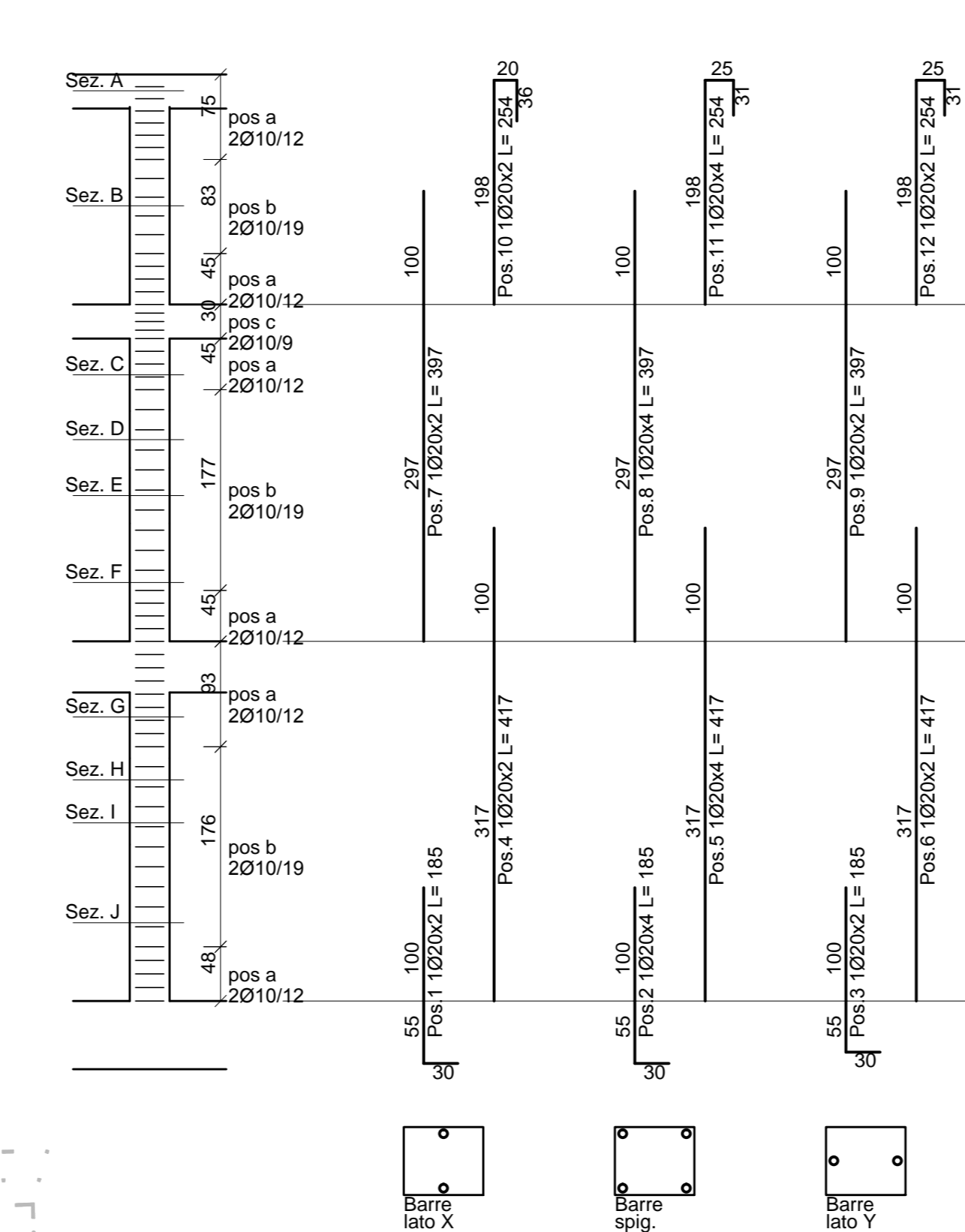


**Sezione H 35x35**

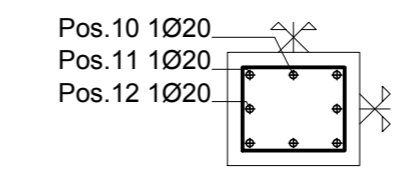


**Pilastrata P12**

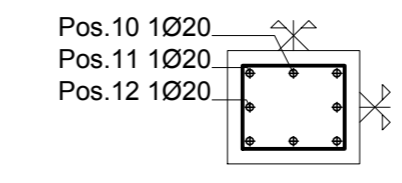
Elenco staffe  
a (2X:2Y)Ø10/12  
b (2X:2Y)Ø10/19  
c (2X:2Y)Ø10/9



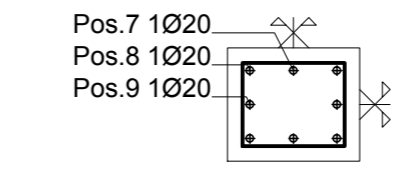
**Sezione A 35x30**



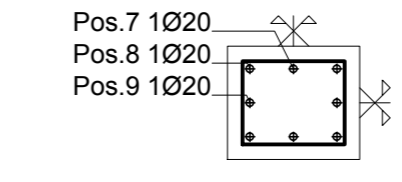
**Sezione B 35x30**



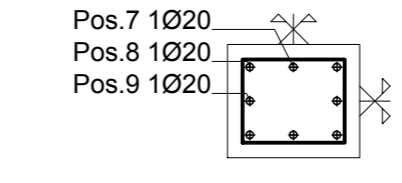
**Sezione C 35x30**



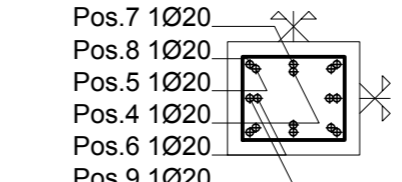
**Sezione D 35x30**



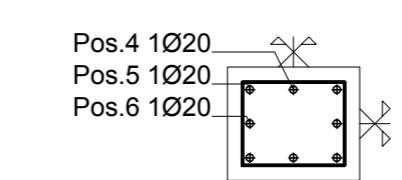
**Sezione E 35x30**



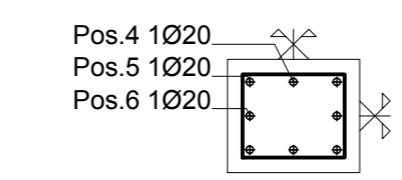
**Sezione F 35x30**



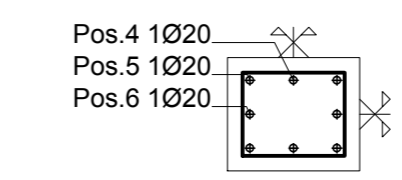
**Sezione G 35x30**



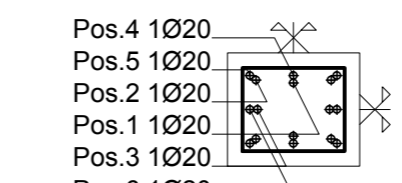
**Sezione H 35x30**



**Sezione I 35x30**

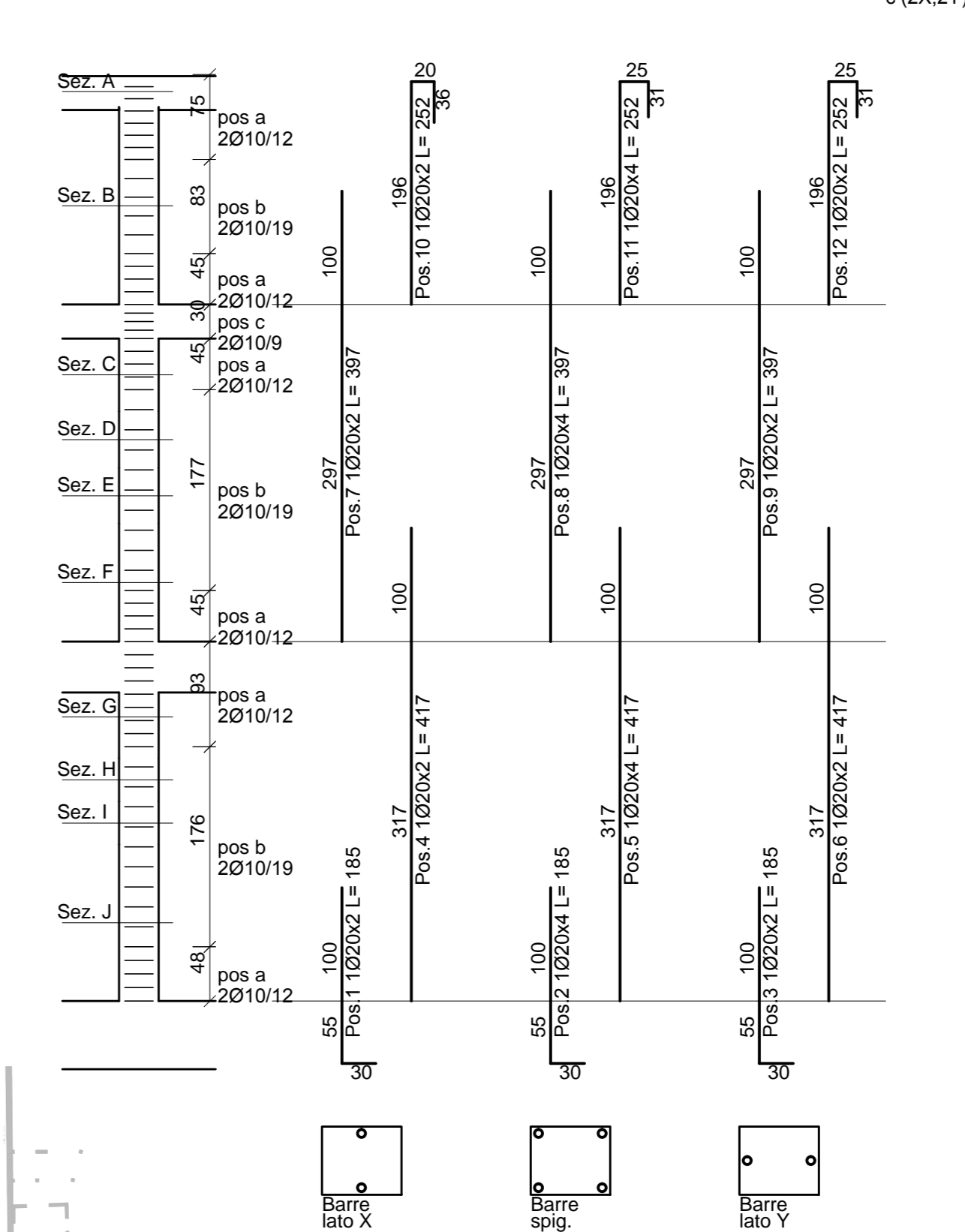


**Sezione J 35x30**

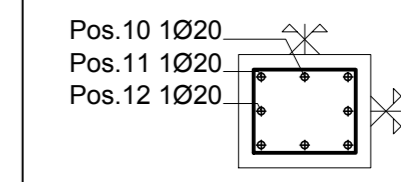


**Pilastrata P13**

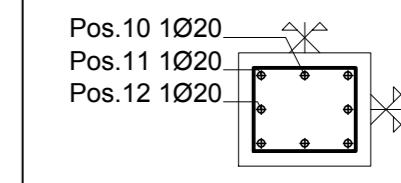
Elenco staffe  
a (2X:2Y)Ø10/12  
b (2X:2Y)Ø10/19  
c (2X:2Y)Ø10/9



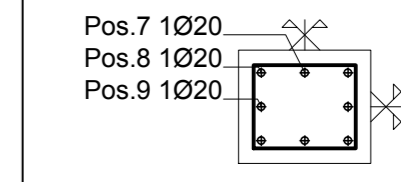
**Sezione A 35x30**



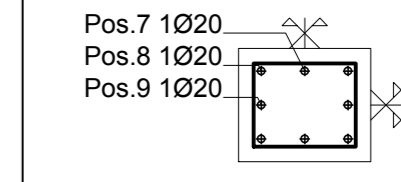
**Sezione B 35x30**



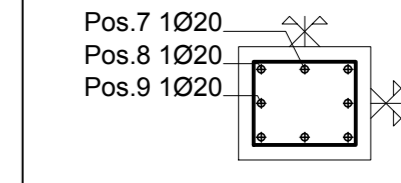
**Sezione C 35x30**



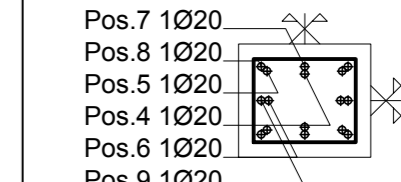
**Sezione D 35x30**



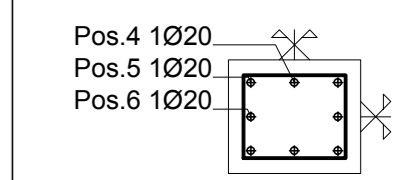
**Sezione E 35x30**



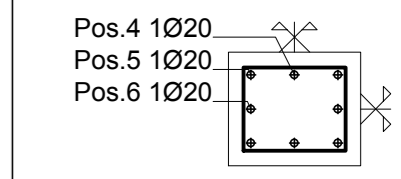
**Sezione F 35x30**



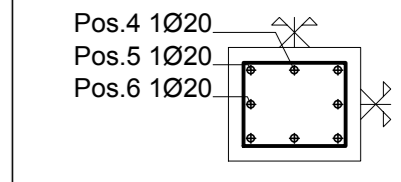
**Sezione G 35x30**



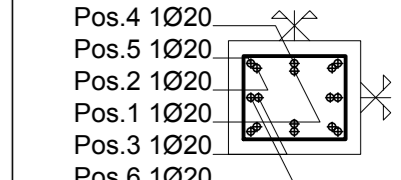
**Sezione H 35x30**



**Sezione I 35x30**



**Sezione J 35x30**



CLASSE DEL CALCESTRUZZO PER:  
Muri e Pilastri : **C28/35**

TIPO DI ACCIAIO PER L'ARMATURA DEL CLS:  
Acciaio in barre ad aderenza migliorata tipo : **B450 C**  
Controllato in stabilimento e saldabile

COPRIFERRO NETTO STAFFE =30mm

REGIONE FRIULI VENEZIA GIULIA PROVINCIA DI UDINE

**COMUNE di TALMASSONS**

**PROGETTO : DEFINITIVO/ESECUTIVO**

**LAVORI DI RISTRUTTURAZIONE DELL' EX MUNICIPIO,  
PER LA REALIZZAZIONE DELLA BIBLIOTECA  
COMUNALE E DI SALE CIVICHE - 1° LOTTO**

PROGETTO ARCHITETTONICO	ARCH. GIANNI VERONA GEOM. IVO FACHIN VIA CICCOGNA 33 - 33100 UDINE
PROGETTO STRUTTURE	STUDIO LINEA INGEGNERIA ING. GIORGIO SERAFINI VICOLO SAN. IN CONDO 11 - 35101 PADOVA
PROGETTO IMPIANTI	STUDIO ENERGIE srl DOTT. ING. PIERLUIGI DA COL VALE DUODIO 74 - 33100 UDINE
COORDINATORE DELLA SICUREZZA IN FASE PROGETTUALE ED ESECUTIVA	GEOM. IVO FACHIN VIA CICCOGNA 33 - 33100 UDINE

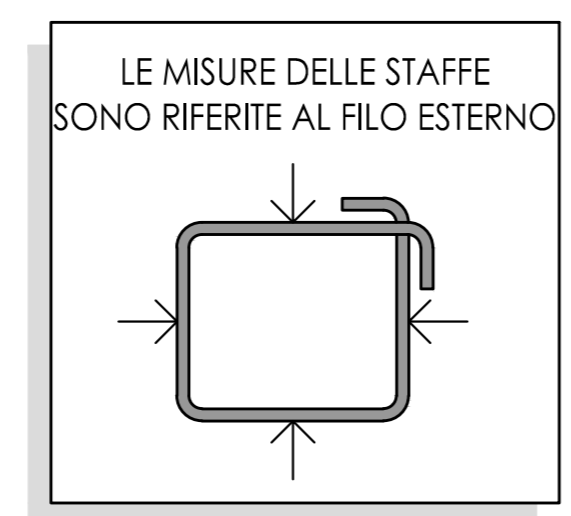
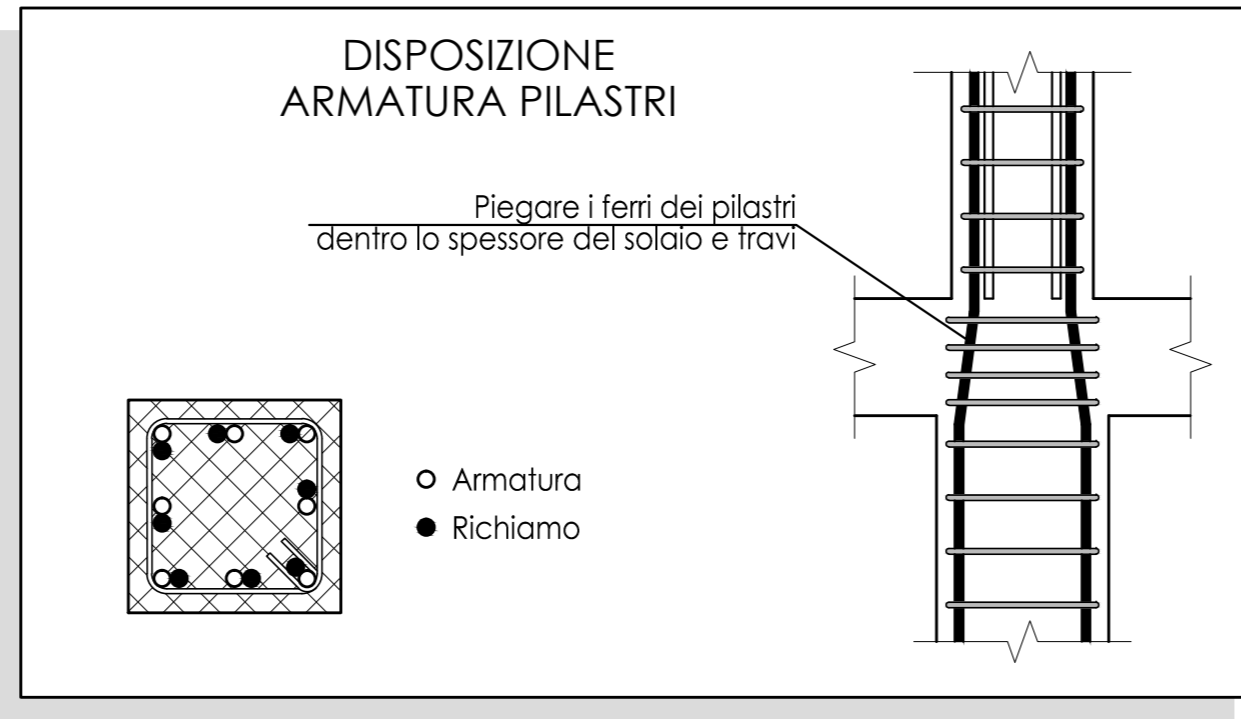
RESPONSABILE UNICO DEL PROCEDIMENTO: **IL DIRETTORE DEI LAVORI**  
GEOM. GIANNI REGEN

OGGETTO:  
**ARMATURA DEI PILASTRI : P8-P9-P10-P11-P12-P13**

scala: **1:50** cod. file: data emissione: **Agosto 2013**

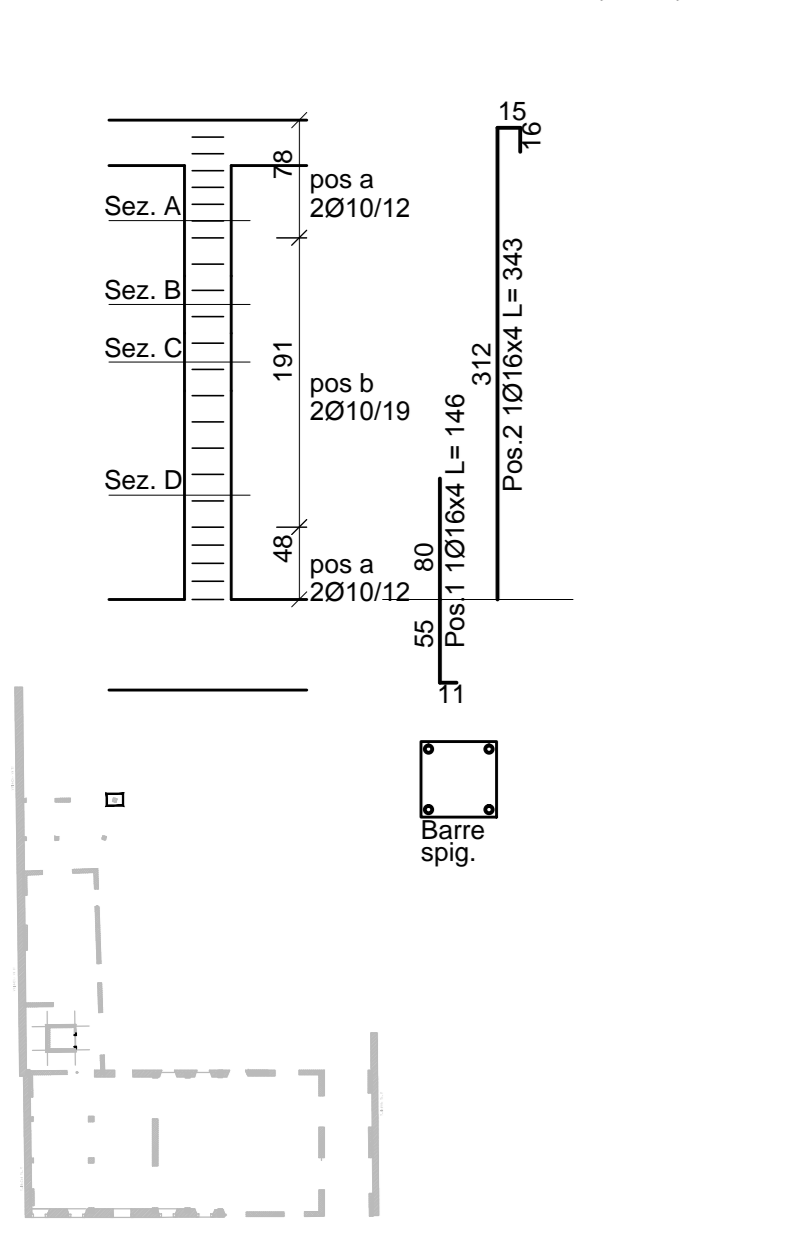
REV.	DATA	DESCRIZIONE	elaborato

**EST 011**

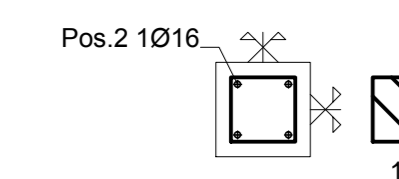


**Pilastrata P10**

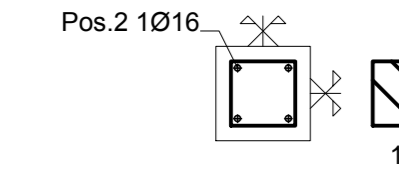
Elenco staffe  
a (2X:2Y)Ø10/12  
b (2X:2Y)Ø10/19



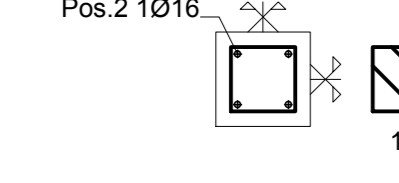
**Sezione A 25x25**



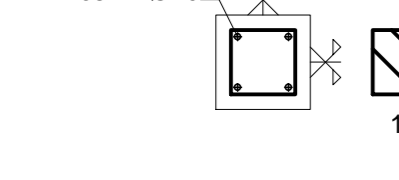
**Sezione B 25x25**



**Sezione C 25x25**

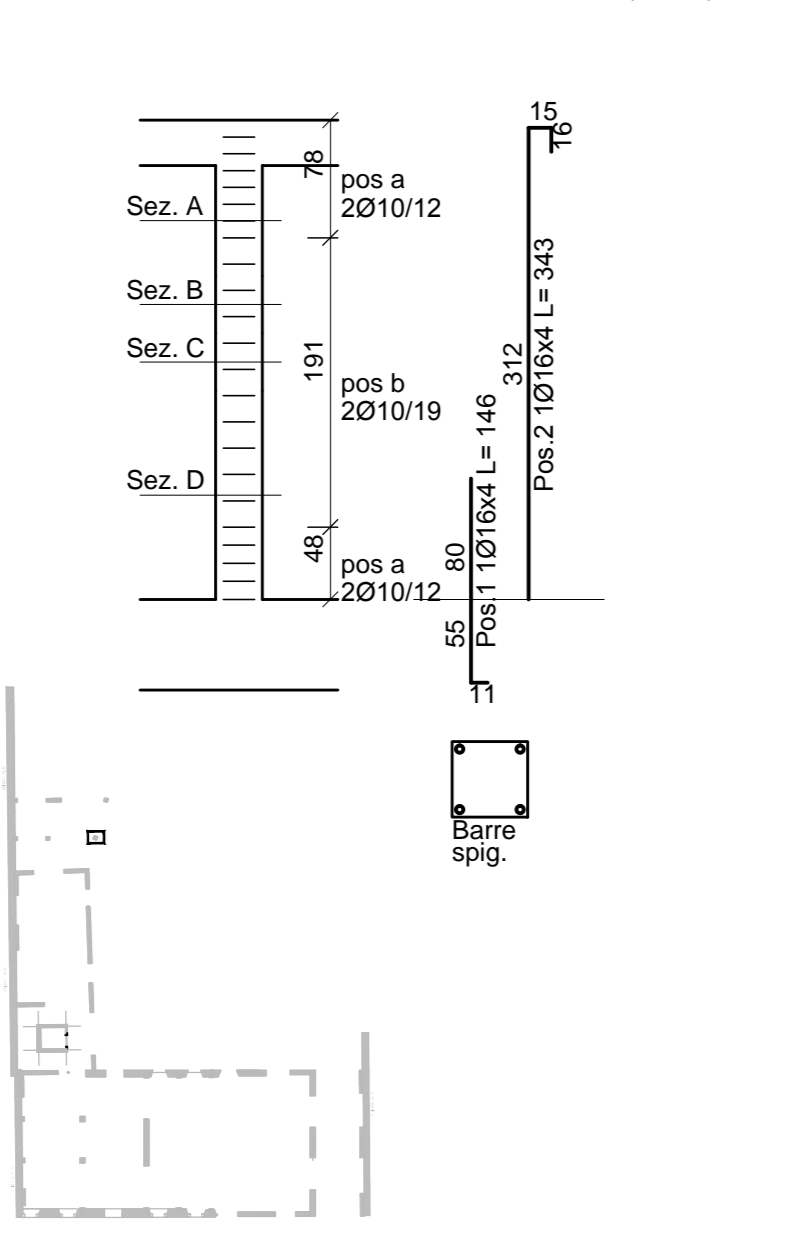


**Sezione D 25x25**

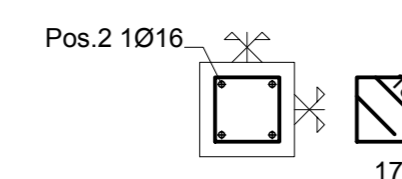


**Pilastrata P11**

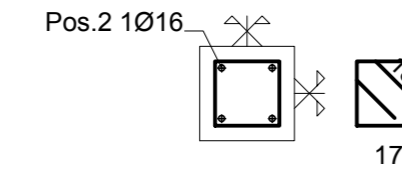
Elenco staffe  
a (2X:2Y)Ø10/12  
b (2X:2Y)Ø10/19



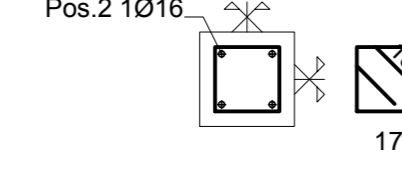
**Sezione A 25x25**



**Sezione B 25x25**



**Sezione C 25x25**



**Sezione D 25x25**

